

Easy Setup of Laboratory Rotomolding Machine

Description



Lab Rotomolding Machine

Easy Setup



- 1- Telescopic door lock
- 2- IR thermometer window
- 3- Cabin light key

- 4- Telescopic door
- 5- Mold
- 6- Temperature controller
- 7- Digital timer for alarm
- 8- Safety cover
- 9- Two frequency inverter for speed control
- 10- Roto mechanism carrier
- 11- Safety door switch
- 12- Four pcs of cooling fan
- 13- Keys for cooling fans
- 14- Auto-Manual mode selection
- 15- Timer start key
- 16- Roto axis 1 start
- 17- Roto axis 2 start
- 18- RS485-USB connection converter

How to start manually

- 1- Place the machine in place, connect earth connection to the body of machine
- 2- Connect power supply to 220VAC-50Hz
- 3- Open safety door (8)
- 4- Move rotomechanism carrier to the far left (10)
- 5- Install the mold on mold holder (5)
- 6- Fill the mold with material while drain valve on mold is open
- 7- Close drain vale on the mold
- 8- Close filling valve of the mold
- 9- Open telescopic door (4)
- 10- Push door lock(1) when door is completely opened
- 11- Move carrier(10) to right in such a way that mold being completely inside hot cabin
- 12- Pull the door lock(1) while keeping the door(4) in hand and close the telescopic door
- 13- Close the safety cover to far right so that it touches the safety switch(11)
- 14- Put the key(14) on manual mode
- 15- Set the requested temperature on digital temperature controller (6) [[How to do this](#)]
- 16- Set the speed of rotation for two axes on frequency inverter (9)

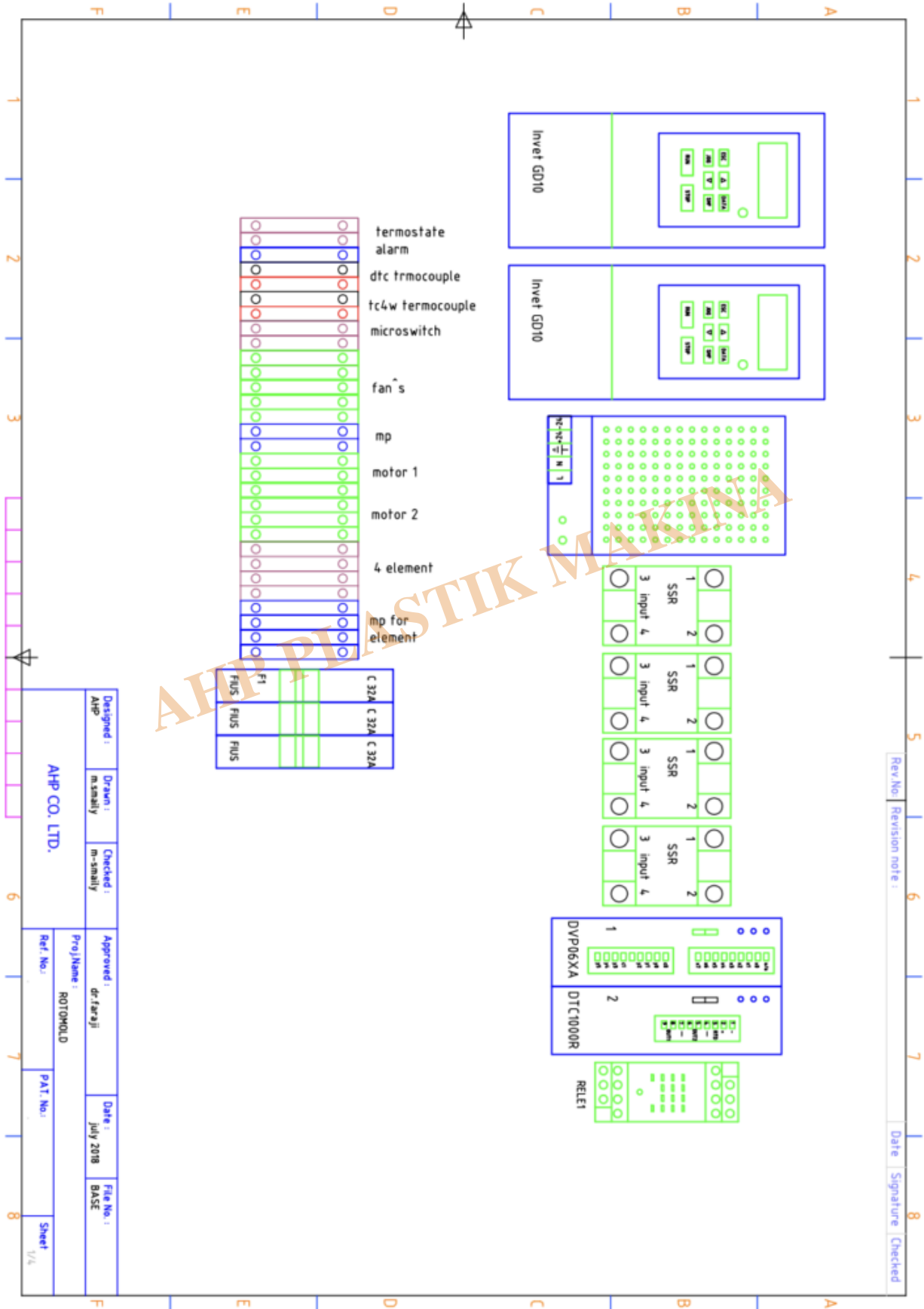
- 17- Turn on two axes rotation using keys 16 & 17
- 18- Set the requested time on digital timer
- 19- After alarm starts(time passed) , Move the carrier to the far left while safety door in closed and mold is turning
- 20- Turn on cooling fans as your requested cooling speed (1 to 4)
- 21- After cooling time passed, Stop rotation of two axes and you can open the safety door
- 22- Open the mold and take the sample out

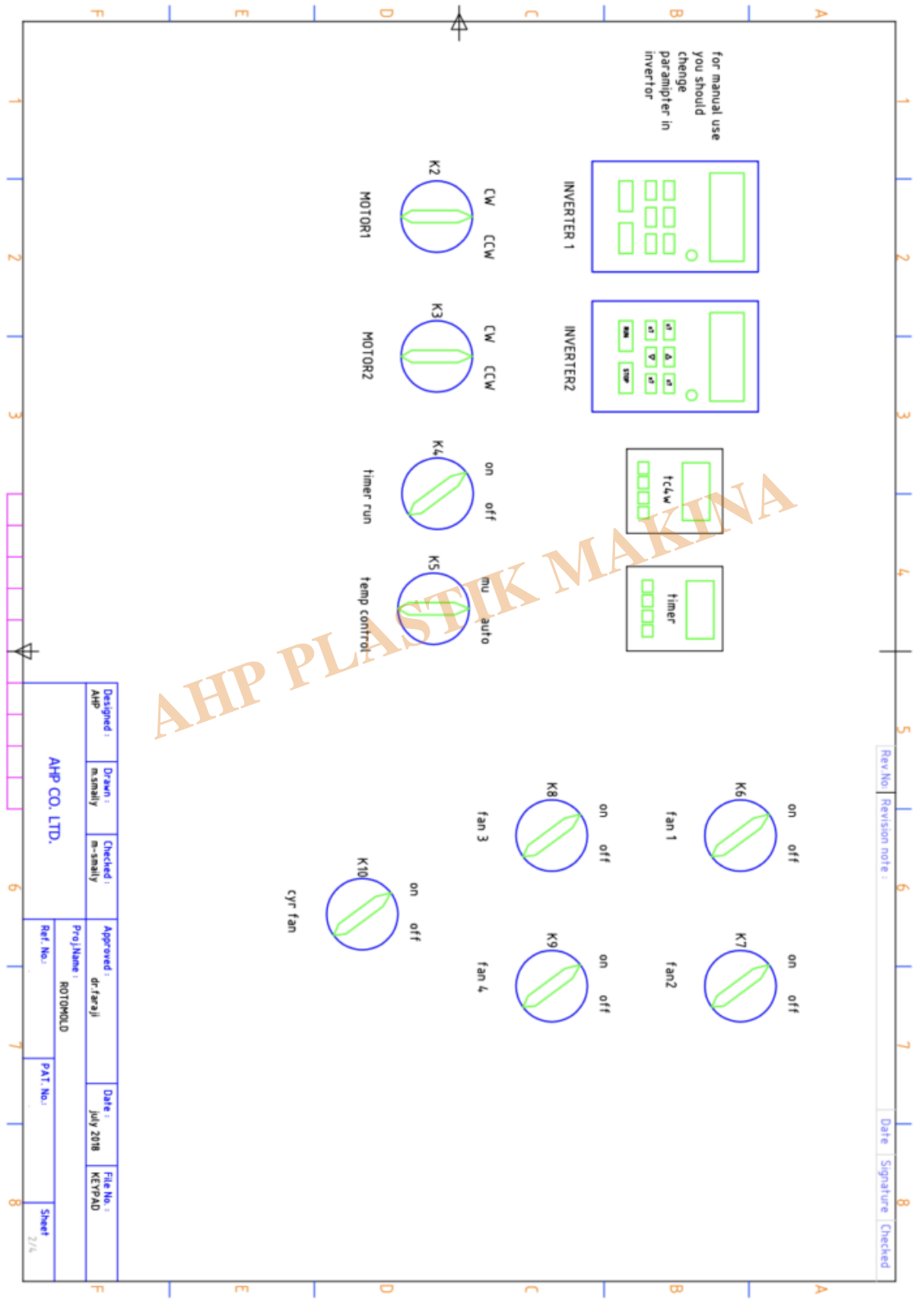
How to start machine using software

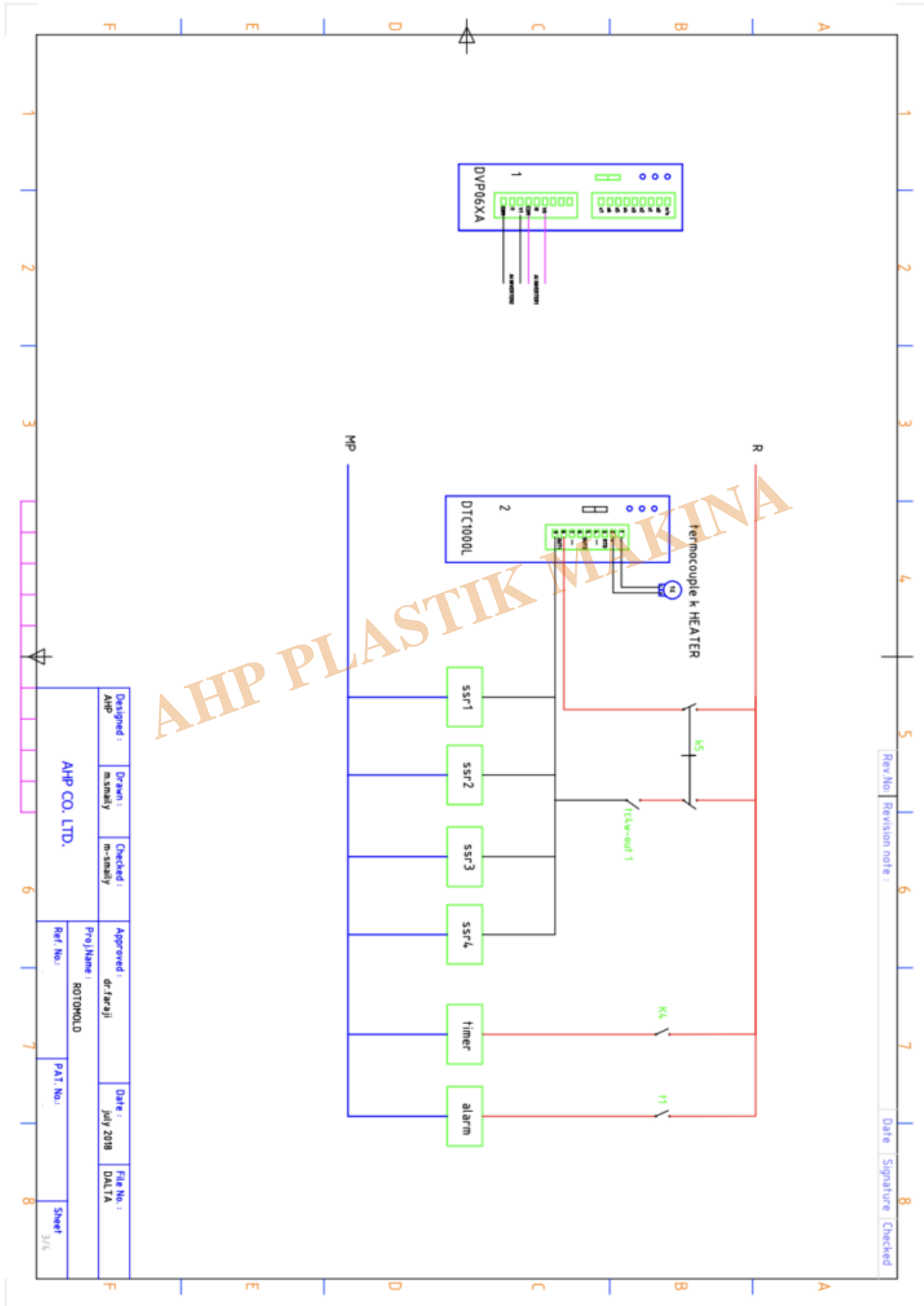
- 1- First of all you need to install RS485-USB(18) converter driver in your computer [[How to do this](#)]
- 2- Connect the USB cable to PC and set up port as the above guide
- 3- Install the software of AHO ROTO [[how to do this](#)]
- 4- Read using software in the next post [[Using AHP ROTO software](#)]

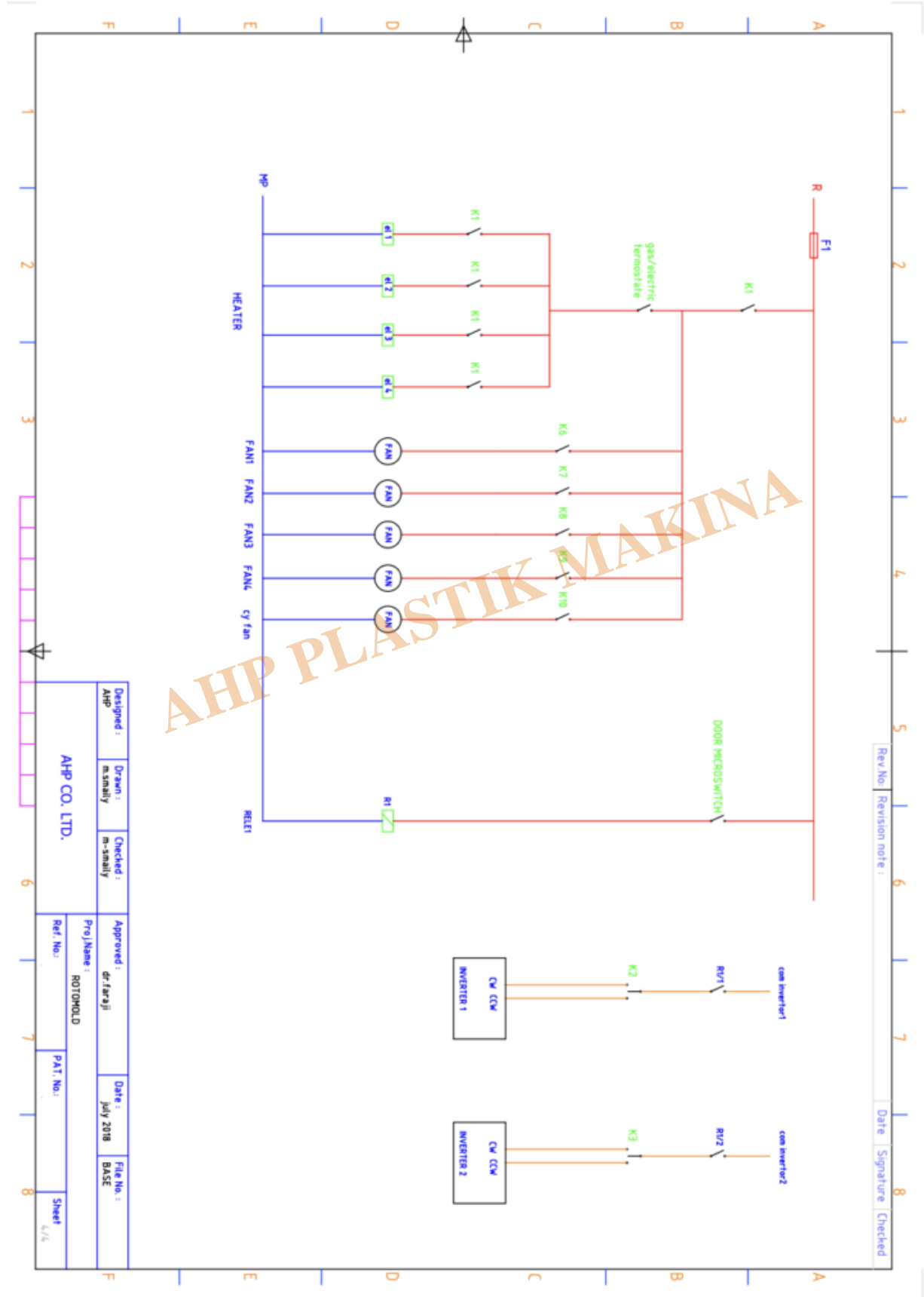
Electrical Drawings

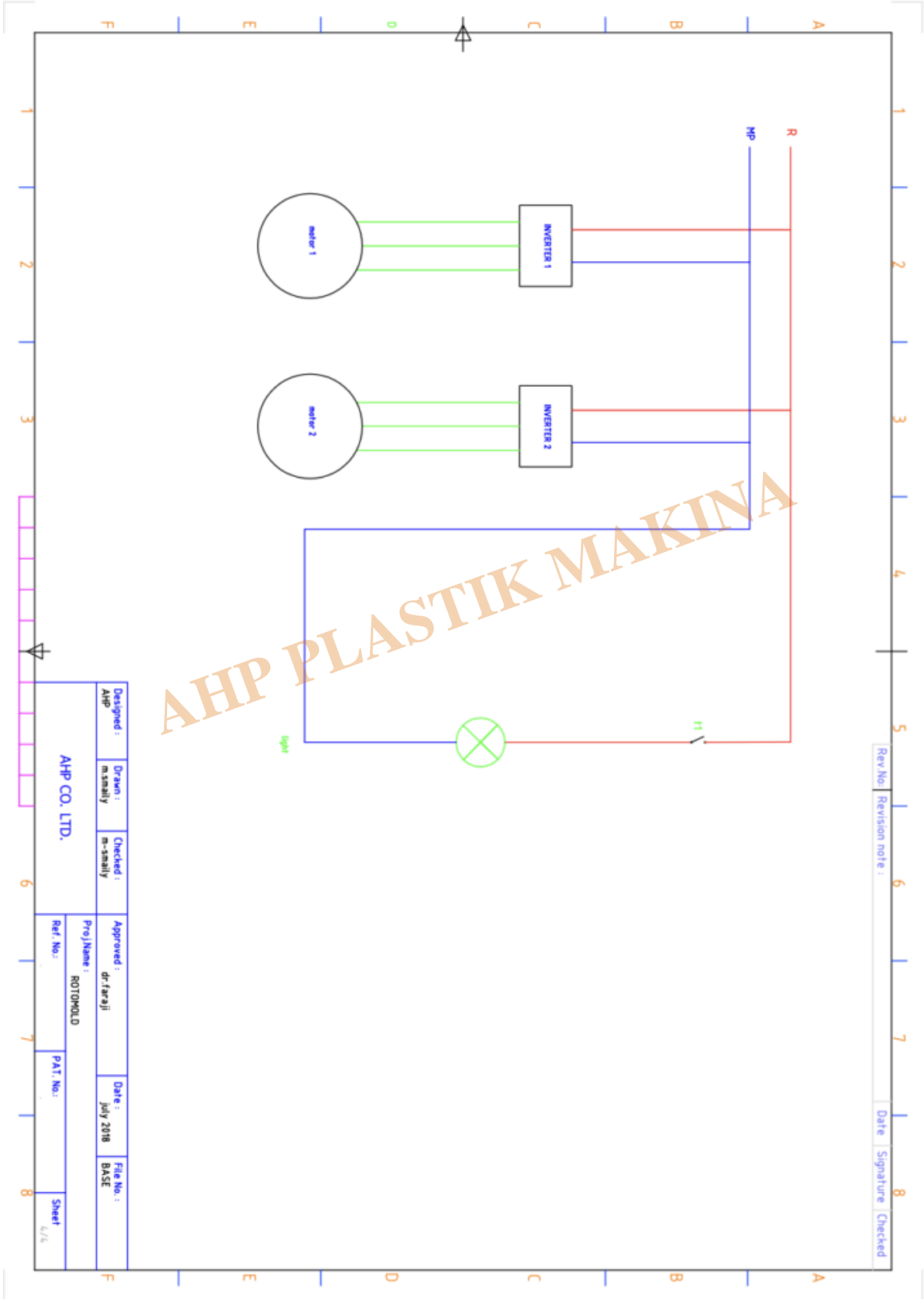
AHP PLASTIK MAKINA











Category

1. How to Use

AHP PLASTIK MAKINA