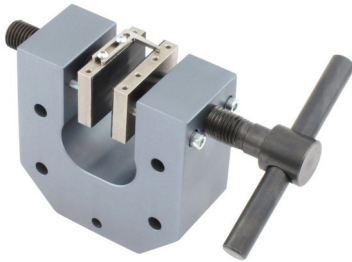


Screw Action Tensile Grip AHP154-10

Description



Mechanical side action grips feature a dual-acting screw design. Mechanical screw side action grips provide an efficient method for holding test specimens in a wide range of tensile testing applications. Mechanical screw action grips are also the most affordable grip in their force class because they depend on the operator to open and close them. They don't require the additional infrastructure associated with powered grips. The dual-acting design ensures that jaws can be adjusted side to side to accommodate different specimen thicknesses, and that the line of tensile force remains concentric with the grip body. All grips and fixtures can be adapted to fit any brand of test machine through the use of an optional coupler.

Jaws can be offset for irregular or asymmetrical specimens such as lap-shear types and component testing. Screw adjustment is possible on either side via hand or with a torque wrench. Engraved scales on the grip body aid in centering grip planes. Standard jaw surfaces include rubber-coated, serrated, smooth-ground, line contact, wave action, diamond surface, and V jaws for round samples.

Model: AHP154-10

Max Force Capacity: 10 kN (2250 lbf)

Max Opening: 34

Sample Type: flat

Temperature Range: 0 to 180 C (32 to 355 F) – other temperatures available on request.

Fixture Adapter: Af159 (15.9 mm or 5/8 in) with 8 mm crosspin; Other adapters available upon request.

Max Jaw Width: 200 mm (7.87 in)

Category

1. Tensile Grips

AHP PLASTIK MAKINA